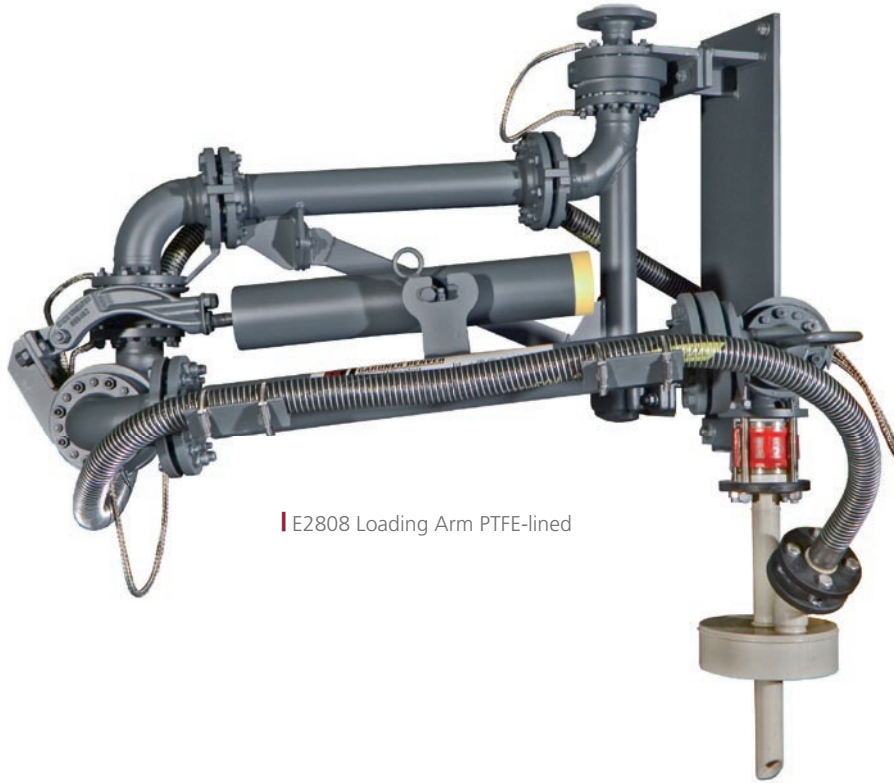


LOADING ARM FOR CHEMICALS | PTFE-LINED



| E2808 Loading Arm PTFE-lined

FEATURES

- * Chemical applications
- * PTFE-lined inside

This type of loading arm is especially designed for loading/unloading of acid and caustics (e.g. 33 % hydrochloric acid, 30 % sulphuric acid etc.).

It is suitable for closed and open top loading/unloading of Road and Rail tankers with flange connection or cone. The closed system prevents the escape of poisonous and aggressive vapor.

The loading arm has a long reach and is suitable for applications where tanker connection flange cannot be accurately positioned.

Because of the robust and high quality design of the swivel joints and the precise loading arm balancing handling of the loading arm is very convenient.

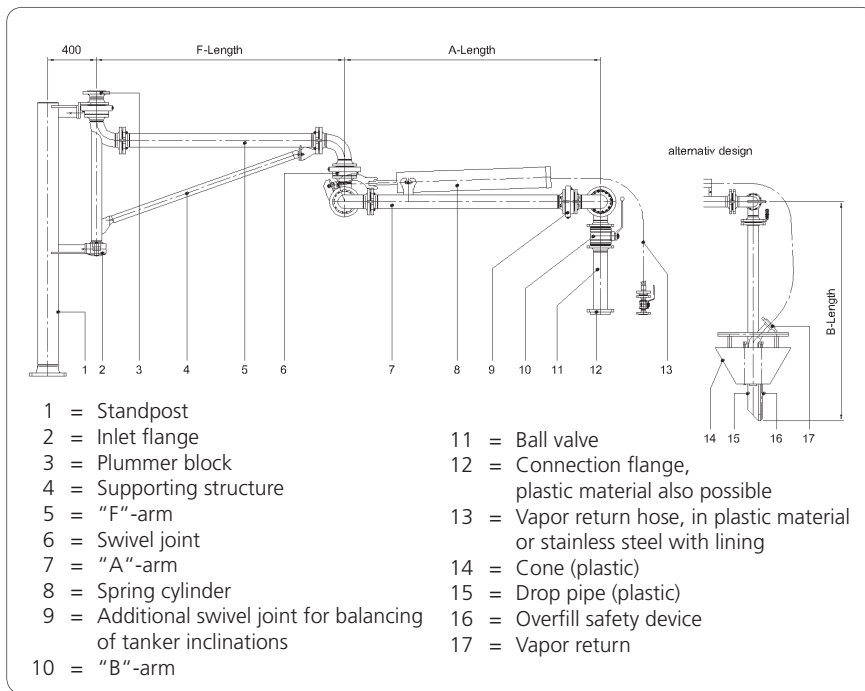
LOADING ARM FOR CHEMICALS

LOADING ARM FOR CHEMICALS | PTFE-LINED

MATERIALS AND TECHNICAL DATA

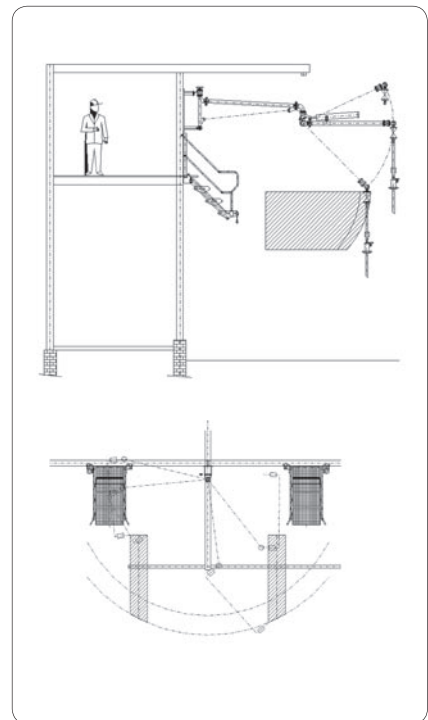
Size DN	Balancing method	Design		Materials of product carrying components	
50, 80, 100, 150	spring cylinder counter weights pneumatically hydraulically	temperature	-50 °C - +150 °C	loading arm	carbon steel, stainless steel
		pressure	10 bar	drop pipe - open filling	plastic
				swivel joint seals	PTFE
				lining	PTFE, PTFE electrically conductive

Please advise with your inquiry the exact product specification!



Inlet flange can also be in down stream design. Alternative variations of the loading arm are possible. Even other loading arm types can be provided with lining.

TYPICAL APPLICATION



EMCO WHEATON PTFE-lined carbon steel swivel joint with flame hardened ball race way for a long life time!

For more details see our data sheet swivel joint **D2000 PTFE**.



D2000 PTFE-lined Swivel Joint

EMCO WHEATON

A Gardner Denver Product

Better by Design



EMCO WHEATON GmbH
 Emcostraße 2-4 · 35274 Kirchhain · Germany
 Phone +49 6422 84-0 · Fax +49 6422 5100
 www.emcowheaton.com · info-de@emcowheaton.com