

## E2704 | BOTTOM LOADING ARM



| E2704 Loading Arm in working position

### FEATURES

- \* Petroleum application
- \* Reliable
- \* Long life
- \* Low maintenance
- \* Easy handling
- \* Environmentally friendly

This unloading arm is designed for applications of light oil product or chemicals. The loading arm is equipped with a special coupler for unloading of russian railcar from underneath. The coupler enables a safe and quick connection independent to the orientation of the adapter lid.

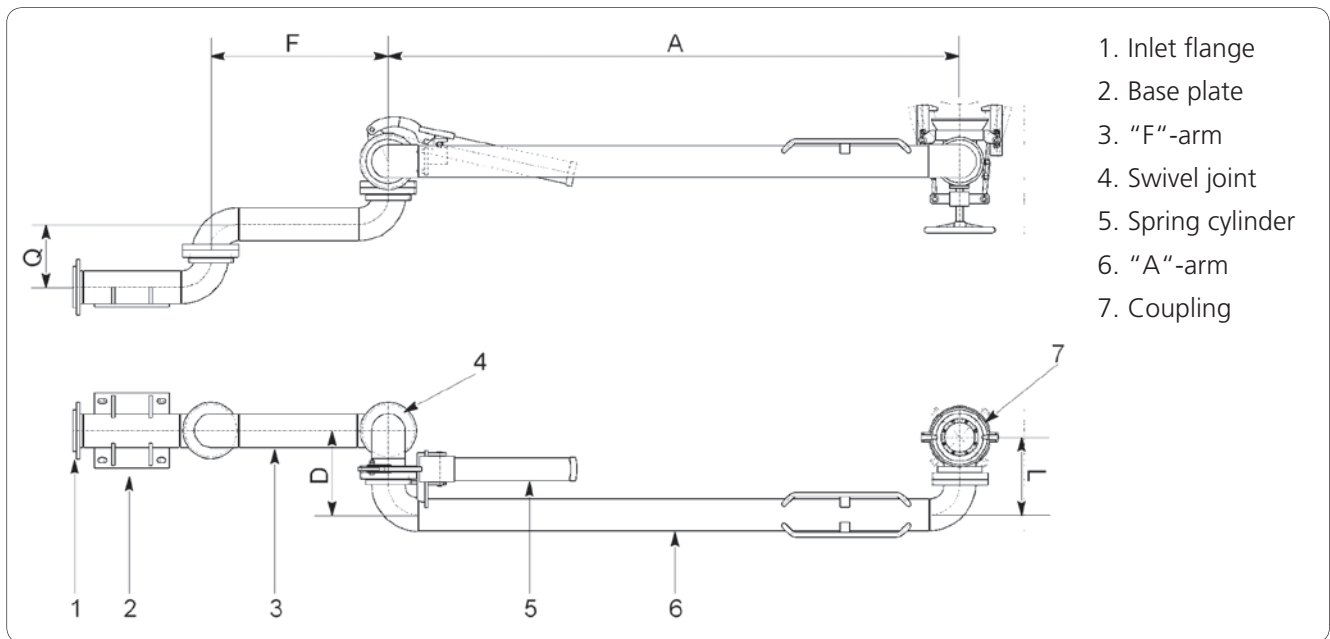
The long reach of the loading arm also enables connection to rail cars when the adapter is not positioned exactly. Due to the low offset of the swivel joints a minimum vertically height ist guaranteed.

The robust and high quality design of the swivel joints and the spring cylinder balancing gives comfortable and smooth handling of the arm.

# E2704

# E2704 | BOTTOM LOADING ARM

## DIMENSIONS AND TECHNICAL DATA

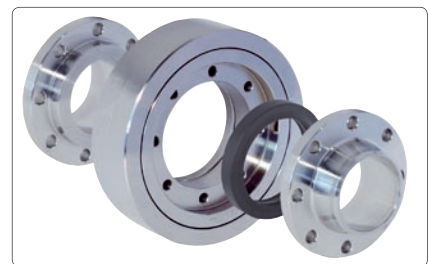
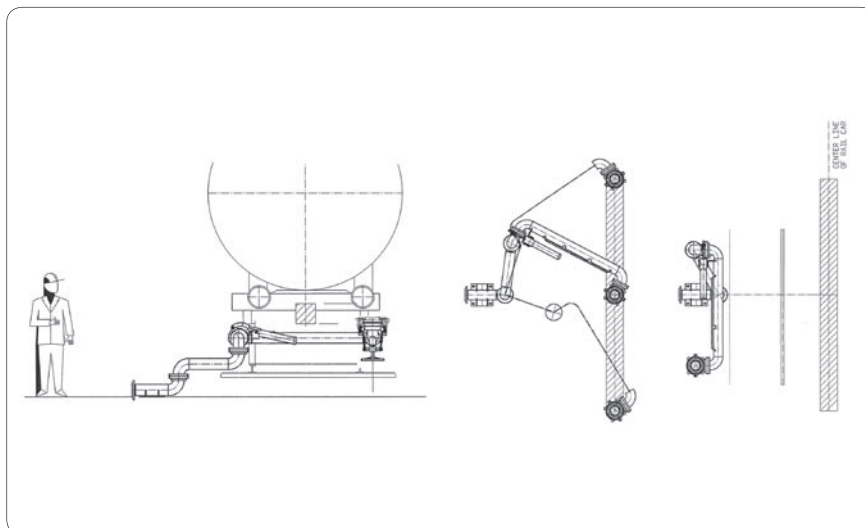


## MATERIALS AND TECHNICAL DATA

Sizes	Material	Seals	Temperature range
DN 150	carbon steel/ aluminium	NBR, FPM, PTFE, special materials	-50 °C to +50 °C, higher or lower temperature on request

\* Based on size of foundation

## ENVELOPE DRAWING



EMCO WHEATON carbon steel swivel joint with flame hardened ball race way for a long life time!

For more details see our data sheet swivel joint **D2000**.

**EMCO WHEATON**

A Gardner Denver Product

Better by  
Design



EMCO WHEATON GmbH  
Emcostraße 2-4 · 35274 Kirchhain · Germany  
Phone +49 6422 84-0 · Fax +49 6422 5100  
www.emcowheaton.com · info-de@emcowheaton.com

Whilst the content of this leaflet has been edited with the greatest care, we are not liable for any errors and/or omissions. Subject to change without notice.

E2704 EN 05/08