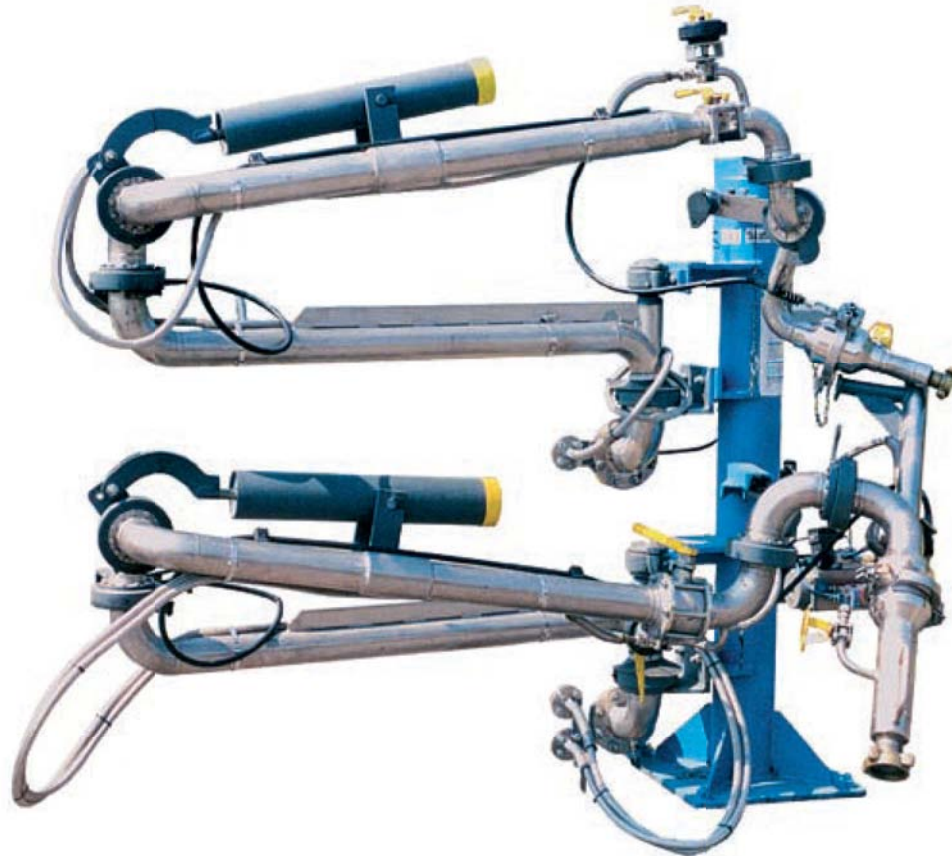


BOTTOM LOADING STATION | E2386



This type of loading arm is especially designed to load products where vapour return is necessary.

It is suitable for the bottom loading/unloading of Road or Rail tankers with flange connection or coupling.

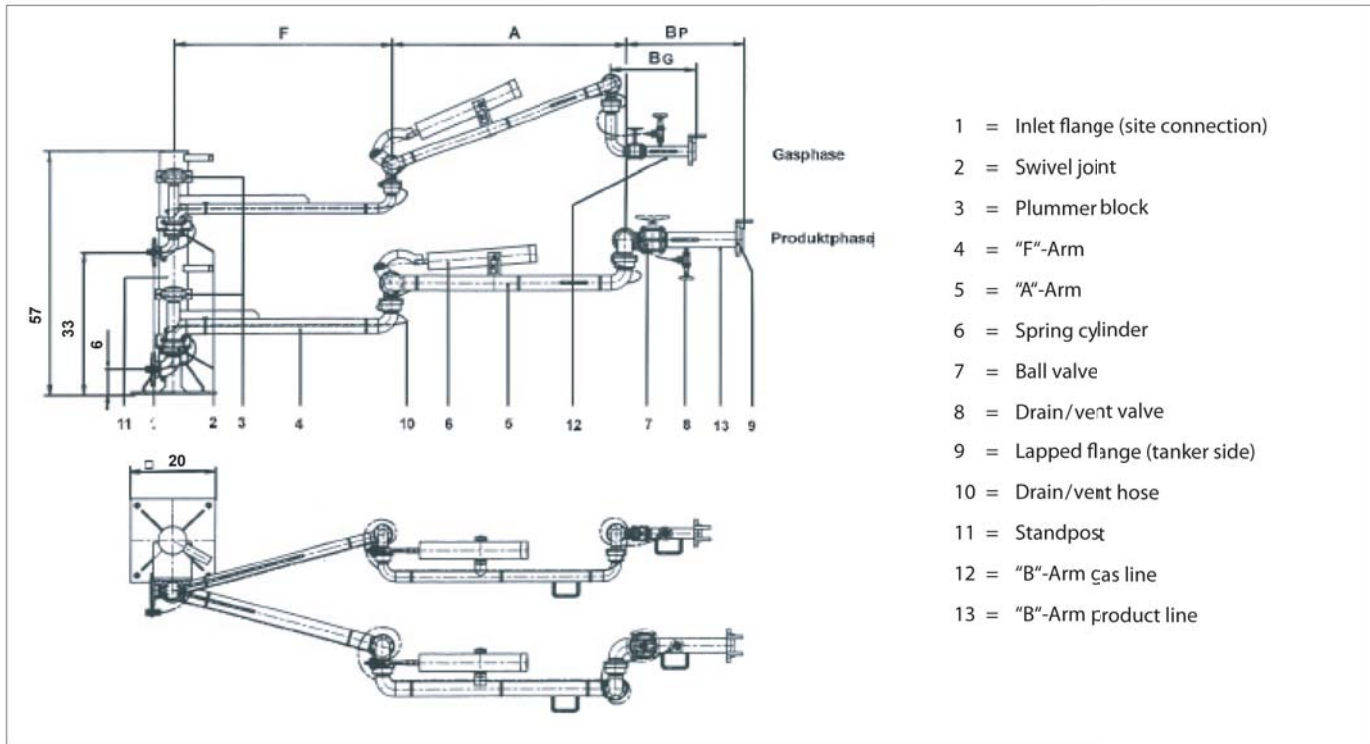
The loading arm has a long reach and is suitable for applications where tanker connection flange cannot be accurately positioned.

The robust and high quality design of the swivel joints and the precise loading arm balancing makes the handling of the loading arm very easy.

- ☞ LPG high-pressure application
- ☞ petroleum application
- ☞ chemical application
- ☞ safe loading from ground level
- ☞ flexible handling
- ☞ long reach

E2386

Dimensions and technical data

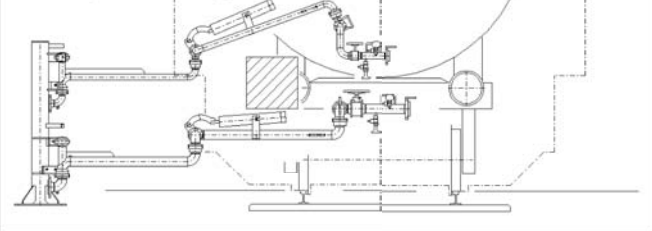


Design and technical data

| | Size | Balancing method | Product entry |
|--------------|------|------------------|---------------|
| Gas line | 2" | Spring cylinder | horizontal |
| Product line | 3" | Spring cylinder | |

Alternative dimensions available on request.
Please advise with your inquiry the exact product specification!

Envelope drawing:

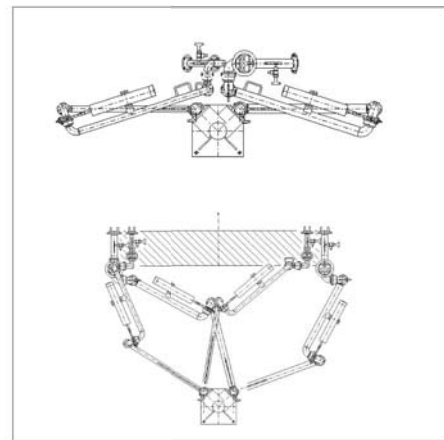


Materials and technical data

| | |
|-------------------------------------|--|
| Materials of product carrying parts | Carbon steel, Stainless steel or low temperature steel |
| Materials of seals | Buna, Viton or PTFE |
| Design pressure | max. 580 PSI up to shut off valve |
| Design temperature | -49 °F to +572 °F |

Accessories:

- sixth swivel joint
- parallel bar
- gas spring balancing for B-length
- emergency release system



Better by Design

Whilst the content of this leaflet has been edited with the greatest care, we are not liable for any errors and/or omissions. Subject to change without notice.



EMCO WHEATON

A Gardner Denver Product

EMCO WHEATON USA INC

9111 Jackrabbit Road · Houston, Texas 77095 · USA

Phone +1 281 856-1300 · Fax +1 281 856-1325

www.emcowheaton.com · sales-us@emcowheaton.com