

LOADING ARM FOR CLOSED FILLING I DATA SHEET

PLEASE FAX OR E-MAIL TO EMCO WHEATON
OR YOUR EMCO WHEATON AGENT.

Company	Contact
Address	Tel.-No.
	Fax-No.
	E-mail
Installation site	Date

Loading arm data

Road tanker	<input type="checkbox"/>
Rail car	<input type="checkbox"/>
Type of loader	
Number of loaders	
Bore size of product loader	
Bore size of vapour return loader	
Material	
Seal material	
Drop pipe	
To be in contact with tank bottom during loading ?	yes <input type="checkbox"/> no <input type="checkbox"/>
Drop pipe spout: 45°?	yes <input type="checkbox"/> no <input type="checkbox"/>
T-type?	yes <input type="checkbox"/> no <input type="checkbox"/>

Accessories required

Closing valve	Specification
Other requirements please specify	

Product data

Product name / formula	
Ambient temperature [°C]	
Operating temperature [°C]	
Pressure [bar]	
Flow capacity (max.) [m³/h]	
Density [kg/dm³]	
PET	
ATEX	
Category	
Explosion group	
Temperature class	

LOADING ARM FOR CLOSED FILLING | DATA SHEET

DIMENSIONS AT STORAGE

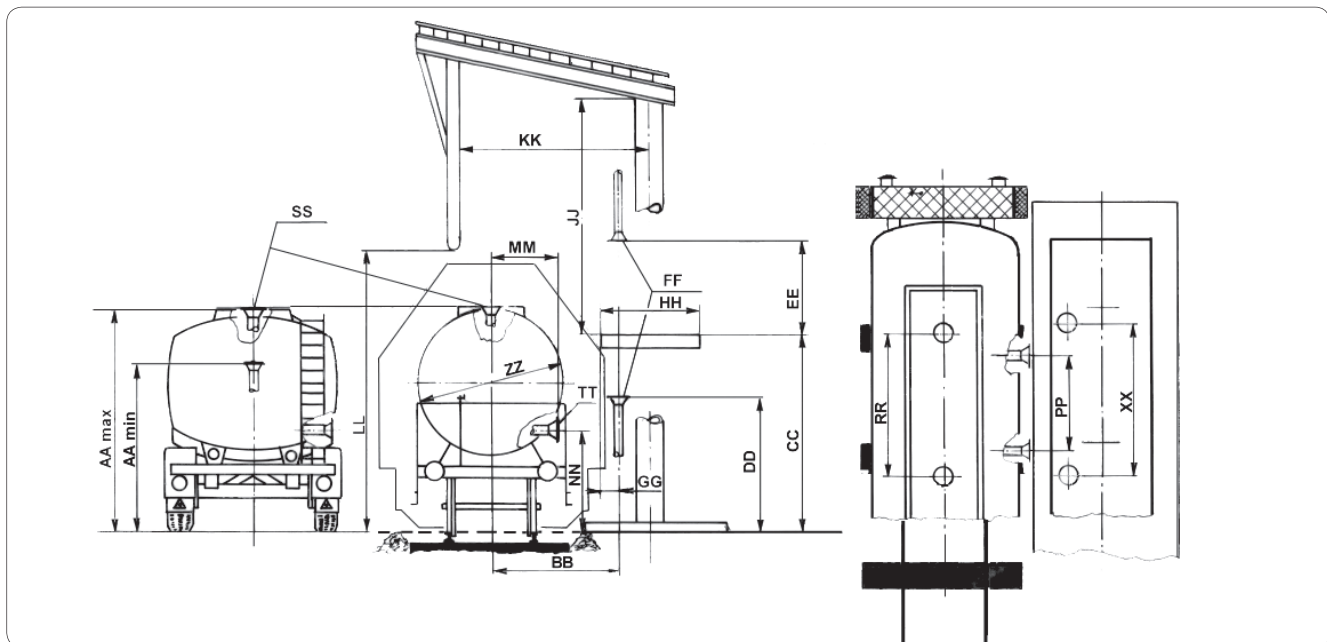
CC	Height of platform	
DD	Height of connection (product from below)	
EE	Height of connection (product from above)	
FF	Specification of flange	
GG	Distance to edge of platform	
HH	Platform width	
JJ	Distance from platform to roof	
KK	Distance from centerline of platform to handrailing	
LL	Distance from handrail to ground	
XX	Center distance between connections (multiple loader installation)	

VEHICLE DIMENSIONS

		Minimum	Maximum
AA	Height of vehicle-flange above ground		
MM	Distance from vehicle center to storage connection		
NN	Height of side connection flange to ground		
PP	Center distance of side connecting flanges		
RR	Center distance of top flange connections		
BB	Distance from vehicle center to storage connection		
ZZ	Tank truck compartment diameter		

SPECIFICATIONS FOR CONNECTING FLANGES

		Product piping	Vapour return piping
SS	Top		
TT	Side		



EMCOWHEATON

A Gardner Denver Product

Better by
Design



EMCO WHEATON GmbH
Emcostraße 2-4 · 35274 Kirchhain · Germany
Phone +49 6422 84-0 · Fax +49 6422 5100
www.emcowheaton.com · info-de@emcowheaton.com

Loading arm for closed filling EN 05/08

Whilst the content of this leaflet has been edited with the greatest care, we are not liable for any errors and/or omissions. Subject to change without notice.