

E2110 | Fixed reach loading arm



The Emco Wheaton range of Standard Loading Arms can be customised to your specific needs simply by quoting the appropriate listed parts numbers when ordering. We have created the 'standard range' to bypass specific Engineering approval through the use of standard drawings and specifications. Customers don't need to 'sign-off' on an approval drawing and orders, we can simply pass your orders to our production team.

Each range of arms is also available as a configured option. Optional customized units are available where alternate materials of construction or specific added features are required.

The E2110 Fixed Reach Loader is designed specifically for:

- Single compartment tank trucks and railroad tank cars.
- Accurate spotting for single compartment tank trucks and rail cars is required.

Materials and Standard Equipment

The standard unit features a combination of carbon steel and aluminum Schedule 40 material.

- Standard available seal materials are Nitrile (Buna) or Viton.

- Standard in nominal pipe diameters of 3 (76mm) and 4 (102mm) inches.
- Base swivel assembly features the incomparable Emco Wheaton D2000 series swivel joints with hardened ball bearing raceways, H-Block sealing system supplied with standard grease Mobil Lux Ep-2 - isolating raceways from liquid contact - and easy infrequent service requirements that will reduce the lifecycle cost of your loading system.
- Balanced using the Emco Wheaton "easy-to-adjust" spring cylinder system - which enhances operator safety and reduces the space required to operate the arm.
- Schedule 10 Aluminum standard length drop tube and 45° mitred opening included.

Specifications

- As an option, the standard is available complete with E471 Loading valve, E0062-017 remote control and E0064-008 vacuum breaker (model without valve and remote assembly is shown)
- Emco Wheaton standard paint system Amerlock 400 Resin - Standard gray.
- Standard welding per ASME B31.3 specification and per Emco Wheaton welding specification ES-8.
- Standard air test 5~80 psi conforming to Emco Wheaton procedure.
- Standard range of motion is 60 degrees. 50 degree (park position) to -10 (load position).
- Standard arm lengths are as noted.
- Pressure drop and flow rate calculations available upon request.
- Depending on your rack design and piping configurations, Emco Wheaton Standard E2110 loading arms can be supplied with the following based swivel joint options:
 - A right-hand or left-hand design (see accompanying images);
 - Up feed configuration (down feed configuration available upon request).
- Standard Emco Wheaton / Gardner Denver Commercial Terms and Conditions and Warranties apply to all orders (Complete text available upon request).

E2110 | Fixed reach loading arm

Configure your part number as shown. E 2 1 1 0 - 4 C V U L 1 2 0 N

MODEL #	DIAMETER (INCHES)	CONSTRUCTION MATERIAL	SEAL MATERIAL	PRIMARY FEED	ORIENTATION	"A" DIMENSION NOMINAL (INCHES)	
E2110	3-inch (102mm) 4-inch (76mm)	C = Carbon Steel	V = Viton B = Buna	U = Up Feed	L = Left Hand R = Right Hand	120" (3048mm)	N = Without E471 loading valve and remote option V = With E471 loading valve and remote option

E2110: Configurations available as standards without E471 valve and remote assembly

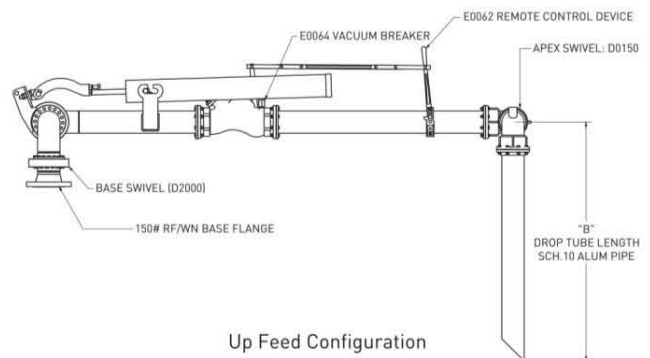
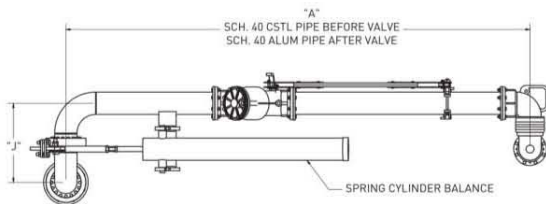
PART #	WEIGHT (LBS.)
E2110-3CVUL120N	230 Lbs
E2110-3CVUR120N	230 Lbs
E2110-3CBUL120N	230 Lbs
E2110-3CBUR120N	230 Lbs
E2110-4CVUL120N	305 Lbs
E2110-4CVUR120N	305 Lbs
E2110-4CBUL120N	305 Lbs
E2110-4CBUR120N	305 Lbs

E2110: Available as standards with E471 loading valve and remote assembly:

PART #	WEIGHT (LBS.)
E2110-3CVUL120V	221 Lbs
E2110-3CVUR120V	221 Lbs
E2110-3CBUL120V	221 Lbs
E2110-3CBUR120V	221 Lbs
E2110-4CVUL120V	273 Lbs
E2110-4CVUR120V	273 Lbs
E2110-4CBUL120V	273 Lbs
E2110-4CBUR120V	273 Lbs

Nominal Dimensions: A= 120" (3048mm) , B = 48" (1219mm), J=16" (407mm)

Left Hand Orientation



Up Feed Configuration

As a part of a continuous commitment to product development the company reserves the right to alter the specification of its products without prior notice.